

# St. Mary's

---

*After Glow*  
"I'd like the memory of me to be a happy one. I'd like to leave an after glow of smiles when life is done. I'd like to leave an echo whispering softly down the ways, of happy times and laughing times and bright and sunny days. I'd like the tears of those who grieve to dry before to long, and cherish those very special memories to which I belong"

~Helen Lowrie Marshall

example



Tree of Life

Return to:  
St. Mary's Church  
209 Victoria Ave  
Fort Frances ON P9A 2B8

807-274-5233



example

## Tree of Life

Return to:  
St. Mary's Church  
209 Victoria Ave  
Fort Frances ON P9A 2B8

# Tree of Life Donations

St. Mary's Church is creating a "Tree of Life". It will be located on the wall in the main entrance. It will be a visual celebration of love! Memorial leaves are a legacy, a lasting way to remember loved ones or family members who have passed away.

You are invited to place your everlasting memorial on this beautiful Tree of Life.

With your donation of \$500, you will receive one leaf on the Tree of Life with the name of a deceased loved one or the family name of deceased relatives. i.e. "John Smith" or "The Smith family"

Order your memorial leaf by completing the detachable form.

## PAYMENT OPTIONS

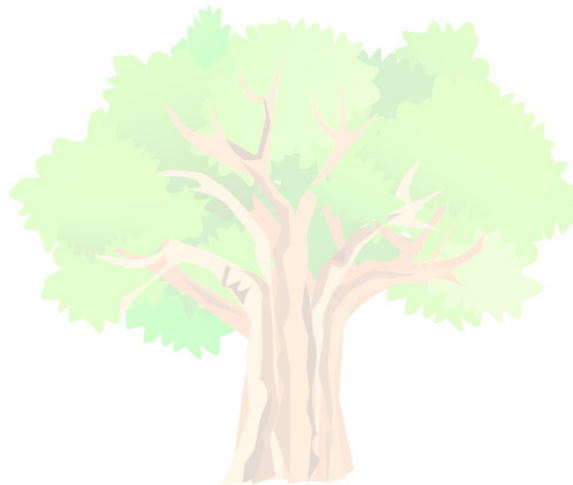
**\$500**

CASH

CHEQUE

—MADE PAYABLE TO

ST. MARY'S CHURCH



◆  
◆  
◆  
◆ Detach and return to St. Mary's Parish

◆ TAX RECEIPT ISSUED TO:

◆ NAME: \_\_\_\_\_

◆ \_\_\_\_\_

◆ ADDRESS: \_\_\_\_\_

◆ CITY \_\_\_\_\_

◆ POSTAL CODE \_\_\_\_\_

◆ **PLEASE PRINT THE EXACT TEXT TO APPEAR ON YOUR LEAF. INCLUDE SPACES**  
◆ **Only include one name on your memorial leaf. i.e. "John Smith" or "The John Smith Family"**

◆ \_\_\_\_\_

◆ \_\_\_\_\_

◆ Enclosed:

◆  Cheque amount \$ \_\_\_\_\_

◆ Cheque number \_\_\_\_\_

◆  Cash amount \$ \_\_\_\_\_

◆

◆